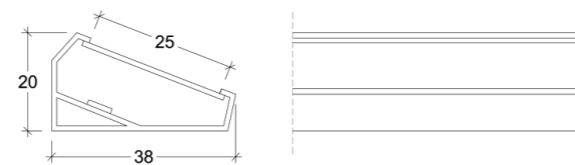
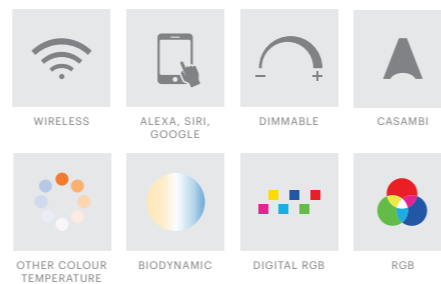




This is a smart conceived design. Its profile enables us to easily create visual effects on the wall.



1. Profile

Reference	Description	Finish
440.00.10.M	Trahea profile white (€/m)	○ 10 White
440.00.20.M	Trahea profile black (€/m)	● 20 Black
440.00.30.M	Trahea profile aluminium (€/m)	● 30 Aluminium

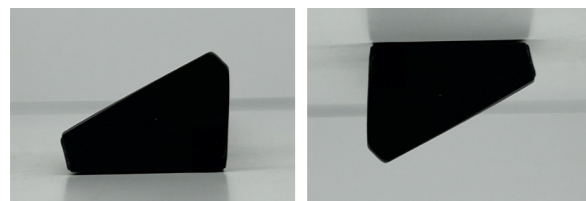
2. LED Strip

Reference	Description	K	IP	LED Pitch	width	Wattage	Density	Flux	Trahea
40806.27.20.M	LEDstrip teM 4,8W 2700K IP20 60/C90/4mm	● 2700K	20	50	4	4,8	60	450	●
40806.30.20.M	LEDstrip teM 4,8W 3000K IP20 60/C90/4mm	● 3000K	20	50	4	4,8	60	450	●
40806.40.20.M	LEDstrip teM 4,8W 4000K IP20 60/C90/4mm	● 4000K	20	50	4	4,8	60	450	●
40509.22.20.M	LEDstrip Tem-9,6W 2200K IP20 120/C80/8mm	● 2200K	20	10	8	9,6	120	840	●
40509.27.20.M	LEDstrip Tem-9,6W 2700K IP20 120/C80/8mm	● 2700K	20	10	8	9,6	120	840	●
40509.30.20.M	LEDstrip Tem-9,6W 3000K IP20 120/C80/8mm	● 3000K	20	10	8	9,6	120	840	●
40509.40.20.M	LEDstrip Tem-9,6W 4000K IP20 120/C80/8mm	● 4000K	20	10	8	9,6	120	840	●
40514.24.20.M	LEDstrip Tem-14,4W 2400K IP20 120/C80/8mm	● 2400K	20	10	8	14,4	120	1300	●
40514.27.20.M	LEDstrip Tem-14,4W 2700K IP20 120/C80/8mm	● 2700K	20	10	8	14,4	120	1300	●
40514.30.20.M	LEDstrip Tem-14,4W 3000K IP20 120/C80/8mm	● 3000K	20	10	8	14,4	120	1300	●
40514.40.20.M	LEDstrip Tem-14,4W 4000K IP20 120/C80/8mm	● 4000K	20	10	8	14,4	120	1300	●
40614.24.20.M	LEDstrip Tem-14,4W 2400K IP20 182/C90/8mm	● 2400K	20	33	8	14,4	182	1400	●
40614.27.20.M	LEDstrip Tem-14,4W 2700K IP20 182/C90/8mm	● 2700K	20	33	8	14,4	182	1400	●
40614.30.20.M	LEDstrip Tem-14,4W 3000K IP20 182/C90/8mm	● 3000K	20	33	8	14,4	182	1400	●
40614.40.20.M	LEDstrip Tem-14,4W 4000K IP20 182/C90/8mm	● 4000K	20	33	8	14,4	182	1400	●
40619.24.20.M	LEDstrip Tem-19,2W 2400K IP20 240/C90/10mm	● 2400K	20	25	10	19,2	240	2300	●
40619.27.20.M	LEDstrip Tem-19,2W 2700K IP20 240/C90/10mm	● 2700K	20	25	10	19,2	240	2300	●
40619.30.20.M	LEDstrip Tem-19,2W 3000K IP20 240/C90/10mm	● 3000K	20	25	10	19,2	240	2300	●
40619.40.20.M	LEDstrip Tem-19,2W 4000K IP20 240/C90/10mm	● 4000K	20	25	10	19,2	240	2300	●
40314.24.65.M	LEDstrip Nix-14,4W 2400K IP65	● 2400K	65		10	14,4	120	1000	●
40619.24.67.M	LEDstrip Tem-19,2W 2400K IP67 240/C90/10mm	● 2400K	67	25	12	19,2	240	2300	●
40619.27.67.M	LEDstrip Tem-19,2W 2700K IP67 240/C90/10mm	● 2700K	67	25	12	19,2	240	2300	●
40619.30.67.M	LEDstrip Tem-19,2W 3000K IP67 240/C90/10mm	● 3000K	67	25	12	19,2	240	2300	●
40619.40.67.M	LEDstrip Tem-19,2W 4000K IP67 240/C90/10mm	● 4000K	67	25	12	19,2	240	2300	●
40324.24.65.M	LEDstrip Nix-24W 2400K IP65	● 2400K	20		10	24	120	1800	●
40707.RGB.20.M	LEDstrip Cet- RGB 7,5W IP20 120/5mm	● RGB	20	50	5	7,5	120	335	●
40712.RGB.20.M	LEDstrip Cet- RGB 12W IP20 60/10mm	● RGB	20	100	10	12,0	60	370	●
40714.RGB.20.M	LEDstrip Cet- RGB 14W IP20 120/10mm	● RGB	20	50	10	14,0	120	670	●
40717.RGBW.20.M	LEDstrip Cet- RGBW 17,4W IP20 60/12mm	● RGBW	20	100	12	17,4	60	836	●
40719.RGBW.20.M	LEDstrip Cet- RGBW 19,2W IP20 240/12mm	● RGBW	20	50	12	19,2	240	900	●
40712.RGB.67.M	LEDstrip Cet- RGB 12W IP67 60/12mm	● RGB	67	100	12	12	60	320	●
40714.RGB.65.M	LEDstrip Cet- RGB 14W IP65 120/12mm	● RGB	65	50	12	14	120	630	●
40717.RGBW.65.M	LEDstrip Cet- RGBW 17,4W IP65 60/14mm	● RGBW	65	100	12	17	60	815	●

● Possible combination  
 ● Possible but external connection between the wire and the LED strip

3. Endcap

Reference	Description
440.11	Trahea endcap (2 units)



4. Cover

Reference	Description
440.01.01.M	Trahea opal cover
440.01.02.M	Trahea transparent cover
440.01.03.M	Trahea black cover

5. Fixations / Mounting Kits

Reference	Description
440.21	Trahea surface clip

6. Driver See drivers section



PROJECT: SANDRA SOLER STUDIO / PHOTO: FRAGMENTS DE MARC TORRA

