

1. Profile

Reference	Description	Finish
401.00.10.M	Opticus 2 profile white	○ 10 White
401.00.20.M	Opticus 2 profile black	● 20 Black
401.00.30.M	Opticus 2 profile alum	● 30 Aluminium

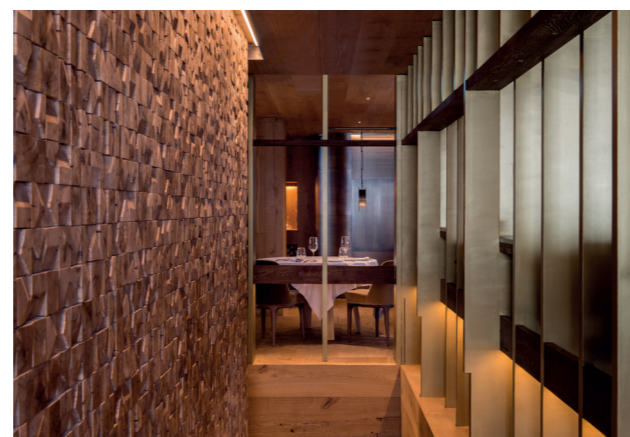
2. Cover

Reference	Description
401.01.01.M	Opticus 2 cover opal PMMA €/m
401.01.15.M	Opticus 2 cover 15D lens (€/m)
401.01.30.M	Opticus 2 cover 30D lens (€/m)
401.01.60.M	Opticus 2 cover 60D lens (€/m)

3. Driver

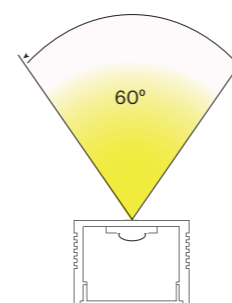
See drivers section

Opticus is the product of the miniaturization of the LED profile combined with the capacity to control light through a single lens. The position of the LED using brackets in different locations makes it possible to set up the light according to the needs of the project: Narrow, Medium, Wide.

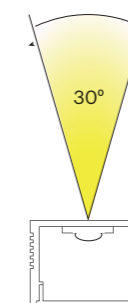


HOTEL GRAU ROIG / PROJECT: ISABEL LÓPEZ VILALTA+ASOCIADOS / PHOTO: OLGA PLANAS

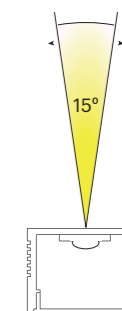
Beam Angles



3 Wide  
401.01.60.M



2 Medium  
401.01.30.M



1 Narrow  
401.01.15.M

4. Endcap

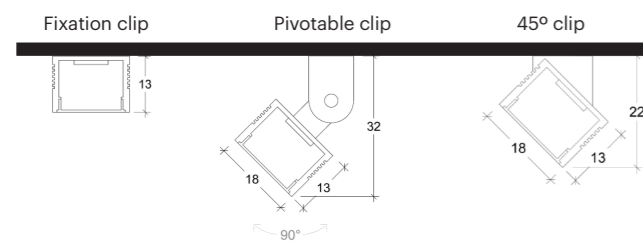
Reference	Description	Finish
401.11.01	Opticus 2 endcap plastic (2 units)	
401.11.10	Opticus 2 endcap white (2 units)	○ 10 White
401.11.20	Opticus 2 endcap black (2 units)	● 20 Black
401.11.30	Opticus 2 endcap aluminium (2 units)	● 30 Aluminium

5. Mechanical connections

Reference	Description
401.24	Opticus 2 linear connector 180D

6. Fixations / Mounting kits

Reference	Description
401.21	Opticus 2 fixation clip (2 pieces)
401.22	Opticus 2 fixation clip 45D (2 pieces)
401.23	Opticus 2 fixation clip pivotable (2 pieces)



7. LED Strip

Reference	Description	K	IP	LED Pitch	width	Wattage	Density	Flux	Opticus-2
40806.27.20.M	LEDstrip teM 4,8W 2700K IP20 60/C90/4mm	● 2700K	20	50	4	4,8	60	450	●
40806.30.20.M	LEDstrip teM 4,8W 3000K IP20 60/C90/4mm	● 3000K	20	50	4	4,8	60	450	●
40806.40.20.M	LEDstrip teM 4,8W 4000K IP20 60/C90/4mm	● 4000K	20	50	4	4,8	60	450	●
40509.22.20.M	LEDstrip Tem-9,6W 2200K IP20 120/C80/8mm	● 2200K	20	10	8	9,6	120	840	●
40509.27.20.M	LEDstrip Tem-9,6W 2700K IP20 120/C80/8mm	● 2700K	20	10	8	9,6	120	840	●
40509.30.20.M	LEDstrip Tem-9,6W 3000K IP20 120/C80/8mm	● 3000K	20	10	8	9,6	120	840	●
40509.40.20.M	LEDstrip Tem-9,6W 4000K IP20 120/C80/8mm	● 4000K	20	10	8	9,6	120	840	●
40514.24.20.M	LEDstrip Tem-14,4W 2400K IP20 120/C80/8mm	● 2400K	20	10	8	14,4	120	1300	●
40514.27.20.M	LEDstrip Tem-14,4W 2700K IP20 120/C80/8mm	● 2700K	20	10	8	14,4	120	1300	●
40514.30.20.M	LEDstrip Tem-14,4W 3000K IP20 120/C80/8mm	● 3000K	20	10	8	14,4	120	1300	●
40514.40.20.M	LEDstrip Tem-14,4W 4000K IP20 120/C80/8mm	● 4000K	20	10	8	14,4	120	1300	●
40614.24.20.M	LEDstrip Tem-14,4W 2400K IP20 182/C90/8mm	● 2400K	20	33	8	14,4	182	1400	●
40614.27.20.M	LEDstrip Tem-14,4W 2700K IP20 182/C90/8mm	● 2700K	20	33	8	14,4	182	1400	●
40614.30.20.M	LEDstrip Tem-14,4W 3000K IP20 182/C90/8mm	● 3000K	20	33	8	14,4	182	1400	●
40614.40.20.M	LEDstrip Tem-14,4W 4000K IP20 182/C90/8mm	● 4000K	20	33	8	14,4	182	1400	●
40619.24.20.M	LEDstrip Tem-19,2W 2400K IP20 240/C90/10mm	● 2400K	20	25	10	19,2	240	2300	●
40619.27.20.M	LEDstrip Tem-19,2W 2700K IP20 240/C90/10mm	● 2700K	20	25	10	19,2	240	2300	●
40619.30.20.M	LEDstrip Tem-19,2W 3000K IP20 240/C90/10mm	● 3000K	20	25	10	19,2	240	2300	●
40619.40.20.M	LEDstrip Tem-19,2W 4000K IP20 240/C90/10mm	● 4000K	20	25	10	19,2	240	2300	●
40314.24.65.M	LEDstrip Nix-14,4W 2400K IP65	● 2400K	65		10	14,4	120	1000	●
40619.24.67.M	LEDstrip Tem-19,2W 2400K IP67 240/C90/10mm	● 2400K	67	25	12	19,2	240	2300	●
40619.27.67.M	LEDstrip Tem-19,2W 2700K IP67 240/C90/10mm	● 2700K	67	25	12	19,2	240	2300	●
40619.30.67.M	LEDstrip Tem-19,2W 3000K IP67 240/C90/10mm	● 3000K	67	25	12	19,2	240	2300	●
40619.40.67.M	LEDstrip Tem-19,2W 4000K IP67 240/C90/10mm	● 4000K	67	25	12	19,2	240	2300	●
40324.24.65.M	LEDstrip Nix-24W 2400K IP65	● 2400K	20		10	24	120	1800	●
40707.RGB.20.M	LEDstrip Cet- RGB 7,5W IP20 120/5mm	● RGB	20	50	5	7,5	120	335	●
40712.RGB.20.M	LEDstrip Cet- RGB 12W IP20 60/10mm	● RGB	20	100	10	12,0	60	370	●
40714.RGB.20.M	LEDstrip Cet- RGB 14W IP20 120/10mm	● RGB	20	50	10	14,0	120	670	●
40717.RGBW.20.M	LEDstrip Cet- RGBW 17,4W IP20 60/12mm	● RGBW	20	100	12	17,4	60	836	●
40719.RGBW.20.M	LEDstrip Cet- RGBW 19,2W IP20 240/12mm	● RGBW	20	50	12	19,2	240	900	●
40712.RGB.67.M	LEDstrip Cet- RGB 12W IP67 60/12mm	● RGB	67	100	12	12	60	320	●
40714.RGB.65.M	LEDstrip Cet- RGB 14W IP65 120/12mm	● RGB	65	50	12	14	120	630	●
40717.RGBW.65.M	LEDstrip Cet- RGBW 17,4W IP65 60/14mm	● RGBW	65	100	12	17	60	815	●

- Possible combination
- Possible but external connection between the wire and the LED strip





HOTEL GRAU ROIG / PROJECT: ISABEL LÓPEZ VILALTA+ASOCIADOS / PHOTO: OLGA PLANAS



PROJECT: SANDRA SOLER STUDIO / PHOTO: MERCÉ GOST PHOTO